

## STANDARD HOUSING DESIGN

- Welded carbon steel construction
- ASME Code, Section VIII construction, stamped and certified
- Design pressure: 150 psi @ 250°F
- Inlet and outlet permanently marked
- Interior: Epoxy coated
- Exterior: Prime coated
- Removable cartridge mounting post
- Swing bolt closure
- Buna-N closure gasket
- Hydraulic headlift

## NPT CONNECTIONS

- 1/4" differential pressure gauge
- 3/4" pressure relief valve and vent
- 2" main drain
- 1 1/2" side drain

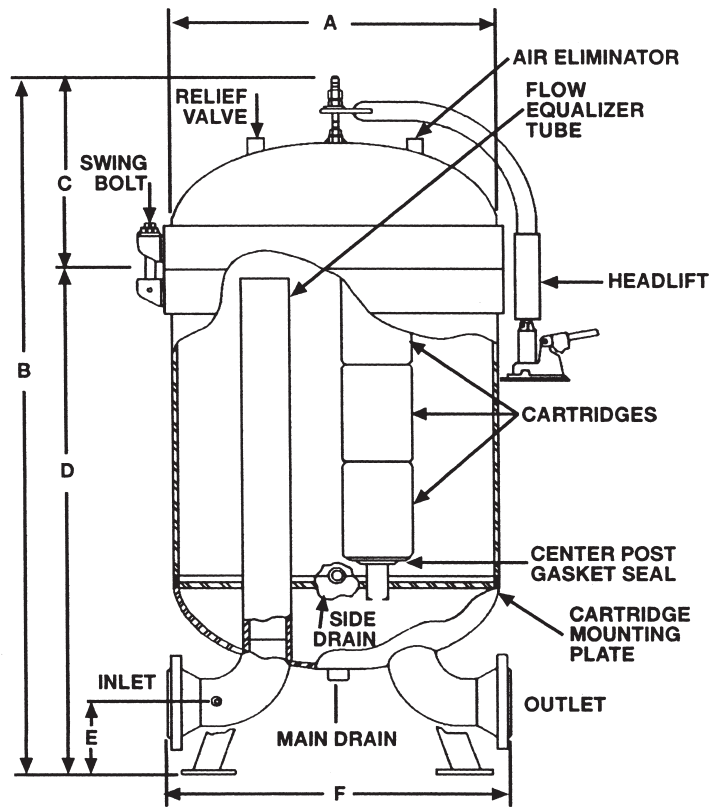
## OPTIONS

- Automatic air eliminator
- Differential pressure gauge
- Pressure relief valve
- Sampling probe
- Cartridge hoist assembly
- Working platform, ladder and handrails on 42" (1067 mm) OD and larger housings

## DATA

MODEL NUMBER	LIQUID VOLUME		REQUIRED CARTRIDGES	DRY WEIGHT	
	gals.	ltrs.		lbs.	kgs.
13F3-C	288	1090	39	1913	868
24F3-C	456	2067	72	3250	1474
31F3-C	702	2657	93	4459	2023
40F3-C	874	3308	120	5380	2440
50F3-C	1167	4417	150	6976	3164
60F3-C	1442	5458	180	8298	3764
67F3-C	1570	5942	201	9602	4355

Weights and volumes are approximate.



## DIMENSIONS

MODEL NUMBER	FLANGED INLET/OUTLET CONNECTIONS		DIMENSIONS												ANCHOR BOLT			
			A		B		C		D		E		F		BOLT CIRCLE		BOLT HOLE	
			in.	mm.	in.	mm.	in.	mm.	in.	mm.	in.	mm.	in.	mm.	in.	mm.	in.	mm.
13F3-C	4	102	32	813	127 <sup>1</sup> / <sub>4</sub>	3232	12 <sup>3</sup> / <sub>4</sub>	324	87 <sup>1</sup> / <sub>2</sub>	2222	6	152	30	762	27 <sup>3</sup> / <sub>8</sub>	695	7 <sup>7</sup> / <sub>8</sub>	22
24F3-C	4	102	42 <sup>3</sup> / <sub>4</sub>	1086	134 <sup>3</sup> / <sub>16</sub>	3408	16 <sup>3</sup> / <sub>4</sub>	425	90 <sup>7</sup> / <sub>16</sub>	2297	6	152	30	762	36 <sup>1</sup> / <sub>2</sub>	927	7 <sup>7</sup> / <sub>8</sub>	22
31F3-C	6	152	48 <sup>3</sup> / <sub>4</sub>	1238	141	3581	18 <sup>3</sup> / <sub>4</sub>	476	95	2413	7 <sup>1</sup> / <sub>2</sub>	191	47	1194	40 <sup>1</sup> / <sub>4</sub>	1022	1 <sup>1</sup> / <sub>8</sub>	29
40F3-C	6	152	54 <sup>3</sup> / <sub>4</sub>	1391	145 <sup>5</sup> / <sub>16</sub>	3691	20 <sup>13</sup> / <sub>16</sub>	529	97 <sup>1</sup> / <sub>4</sub>	2470	7 <sup>1</sup> / <sub>2</sub>	191	43	1092	50	1270	1 <sup>1</sup> / <sub>8</sub>	29
50F3-C	8	203	60 <sup>3</sup> / <sub>4</sub>	1543	152 <sup>1</sup> / <sub>16</sub>	3878	23 <sup>1</sup> / <sub>4</sub>	591	102 <sup>3</sup> / <sub>4</sub>	2610	9	229	55	1397	52	1321	1 <sup>1</sup> / <sub>8</sub>	29
60F3-C	8	203	67	1702	154 <sup>3</sup> / <sub>4</sub>	3931	25 <sup>3</sup> / <sub>8</sub>	645	102 <sup>3</sup> / <sub>4</sub>	2610	9	229	60	1524	52	1321	1 <sup>1</sup> / <sub>8</sub>	29
67F3-C	8	203	73	1854	158	4013	27 <sup>5</sup> / <sub>8</sub>	702	104	2642	9	229	62	1574	56	1422	1 <sup>1</sup> / <sub>8</sub>	29

All dimensions are approximate and should be used for estimating purposes only.

### NOTES:

1. Housing model number will include cartridge model number when selected.
2. Clay treater housings use Facet bag or canister style cartridges, 3 deep per stack.
3. Clay cartridges are **not** installed at factory prior to shipment.
4. Removable bundle design available on request. Contact your Facet Representative for details.